

QUICK GUIDE

Rooms For Hire	Aprox No's
• Garden	
• Studio (1st floor)	60
• Library (1st floor)	20
• Auditorium (ground)	60
• Garden Room (ground)	12
• Licensed Cafe Bar (ground)	25

Facilities

- Digital theatre system in Auditorium
- Meet and greet service if required
- Disabled access to ground floor
- Flexible room layouts
- Flipchart and stand
- Projection screen
- Natural daylight
- White board
- Car parking
- Wifi

A LITTLE ABOUT US

The Old School House is a charitable organisation. It hosts a wide variety of events and offers a wealth of facilities, serving the local communities of the Dales. While an experienced administrator is employed part time the vast majority of the work is done by kind volunteers from the local community.

This leaflet has been sponsored by



Dawn Clarkson Associates
Accountants and Business Advisors
Minding your business

HOW TO FIND US



The Old School House is well situated within easy walking distance of the market place from where regular bus services run.



The Old School House
Leyburn
Arts and Community Centre

Room Hire & Facilities



BOOKING AND CONTACT INFORMATION

The Old School House, Richmond Road,
Leyburn DL8 5DL

Telephone: 01969 624510

Email: admin@oldschoolhouseleyburn.com

Website: oldschoolhouseleyburn.com

Facebook: facebook.com/oldschoolhouseleyburn



Leyburn Town Council



The Elm House Trust



Registered Office: Thornborough Hall, Leyburn, North Yorkshire DL8 5AB

Registered in England. Company Limited by Guarantee No. 06417261

Registered Charity No. 1122092

THE FACILITIES CAN BE USED FOR

Meetings - Community Events - Parties
Conferences - Performances - Presentations
Anniversaries - Live Events - Arts & Crafts
Exhibitions - Demonstrations - Societies
Exercise & Dance Classes - Courses - Clubs

A LOT TO OFFER

If you are looking for a distinctive setting for your activity or meeting, then The Old School House can meet every eventuality from a small business meeting to a pantomime performance.

The facilities include: wireless broadband, fully equipped kitchen facilities on two floors and meeting rooms. The auditorium with high quality seating and HD projector with surround sound system is fully sound proofed. There is a café and licensed bar, a disabled toilet, a garden space, ample parking and a meet and greet service if required.

The weekly film showings, in the 60-seat auditorium appeal to all age groups. The meeting rooms are used for a variety of activities including jewellery making, portrait painters, coffee mornings, dance classes, birthday parties and are widely used by local clubs and societies.

LICENSED CAFE BAR

The Cafe/Bar is run and staffed by volunteers. Local producers and suppliers are used to provide Black Sheep Yorkshire Pale Ale, Peroni Lager, Thatchers Cider, Wensleydale Jersey Icecream, Yorkshire Tea and a selection of soft drinks, biscuits and crisps.

With the assistance of volunteers we open prior to all film screenings and other events being held. Volunteers are always welcome to join our happy team. The cafe bar is also open all day Friday and Saturday.

BOOKINGS AND ADDITIONAL INFORMATION

Tel: 01969 624510

Email: admin@oldschoolhouseleyburn.com

Website: www.oldschoolhouseleyburn.com

THE AUDITORIUM



The Auditorium is situated on the ground floor and is fully accessible to all. It boasts a flexible space with lots of natural light. It is equipped with a high quality digital theatre system complete with surround sound for showing movies. The room measures 9.6m x 6.0m.



THE GARDEN ROOM

The garden room is adjacent to the auditorium. The folding doors can be opened up to form one large space with the auditorium. The garden room measures 4.5m x 3.5m and has the benefit of a disabled toilet. There are french windows that open onto the rear garden, a useful feature in the summer.



THE CAFE BAR

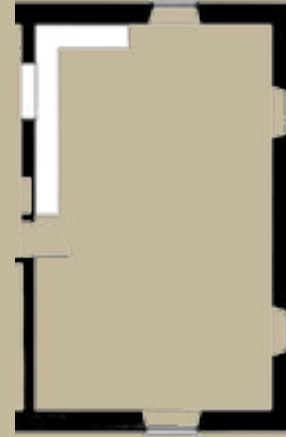


The licenced cafe bar is a useful facility that can be used to enhance many events. It has a high ceiling and a pleasant, bright and airy atmosphere. Local artists work can often be seen adorning the walls. The cafe is open prior to all our regular scheduled film screenings as well as all day Friday and Saturday.

THE STUDIO



The studio measures a generous 9.6m x 6.0m and can be used for a variety of purposes. The serving hatch to the kitchen makes it particularly useful for some events. It is also equipped with a picture hanging system; exhibitions of art work can often be seen hanging there.



THE LIBRARY



The Library on the first floor provides a smaller more intimate space measuring 6.3m x 3.6m and caters for around 20 people. This room also houses a permanent exhibition of stitched textiles celebrating the 100th anniversary of the Embroiders Guild.



THE KITCHEN



Besides the cafe bar facilities, there is a kitchen upstairs for use of people engaged in various activities where they can prepare their own food and drink and take a welcome break. A serving hatch between the kitchen and the studio can be opened to service a variety of events taking place in the studio.